

55



2002 CURRICULUM UPDATE



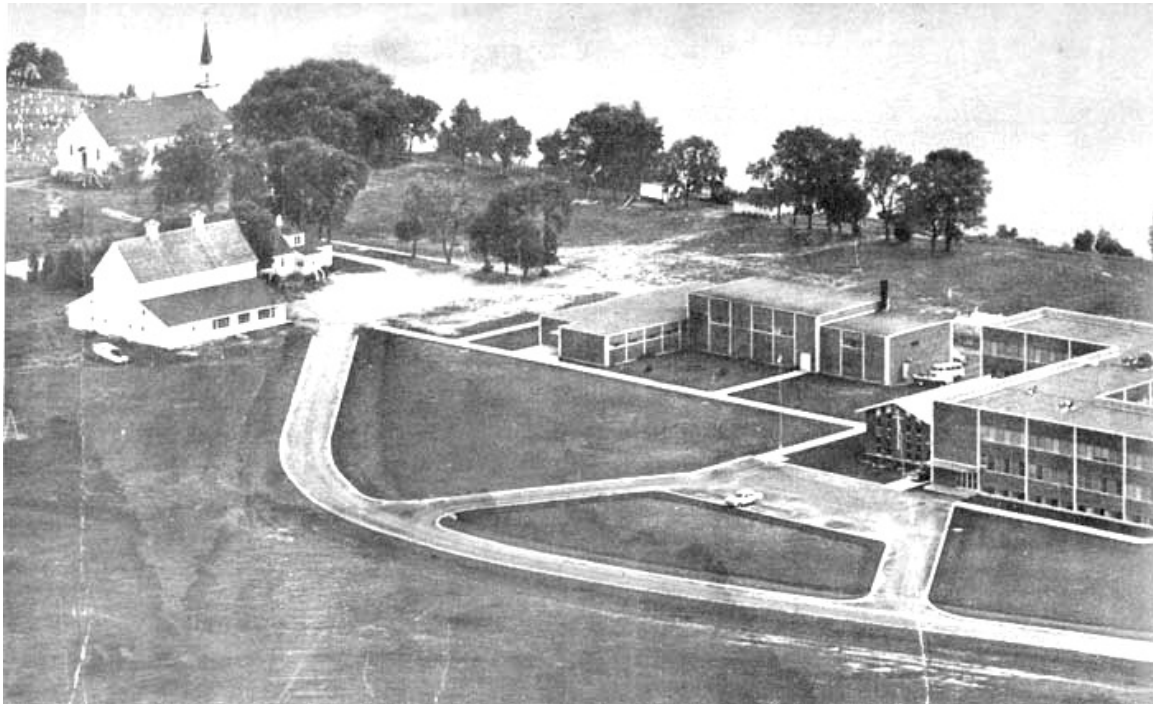


Nishnawbe Aski Nation
ᐱᓂᓂᐱᐅᓂᓂ ᐱᓂᓂ ᐱᓂᓂ

HEALING THE GENERATIONS
RESIDENTIAL SCHOOL

2002 CURRICULUM UPDATE

ST. MARGARET'S RESIDENTIAL SCHOOL FORT FRANCES, ON





2002 CURRICULUM UPDATE

CECELIA JEFFREY'S RESIDENTIAL SCHOOL
REDDITT, ON





Nishnawbe Aski Nation
ᐱᓂᓂᐱᐅᓂᓂ ᐱᓂᓂ ᐱᓂᓂ

HEALING THE GENERATIONS
RESIDENTIAL SCHOOL

2002 CURRICULUM UPDATE

ST. MARY'S RESIDENTIAL SCHOOL KENORA, ON





2002 CURRICULUM UPDATE

A sepia-toned photograph of a large, multi-story building, likely a school or institutional building, featuring two prominent towers with conical roofs. The building is situated in a rural setting with bare trees and a fence in the foreground. The photograph is mounted on a light-colored card with a decorative border.



A black and white photograph of a large, multi-story brick building, identified as the University of Maryland Medical Center. The building features a central portico with four columns and a small dome on the roof. There are several windows and a balcony on the upper floors. Two vintage cars are parked in front of the building. Bare trees are visible in the foreground and background.



2002 CURRICULUM UPDATE



2002 CURRICULUM UPDATE

A black and white photograph of a large, multi-story brick building, likely a school or institutional structure. The building features a prominent steeple on the left side and multiple windows across its facade. The building is surrounded by bare trees and a snow-covered ground, suggesting a winter setting. The architecture is characterized by its brick construction and gabled rooflines.



2002 CURRICULUM UPDATE

A black and white photograph of a large, multi-story brick building, likely a school or institutional structure, featuring a central tower and multiple gabled sections. The building is surrounded by trees and a grassy field, with a body of water visible in the background.

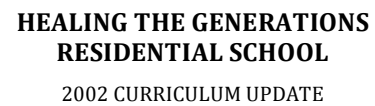


2002 CURRICULUM UPDATE



2002 CURRICULUM UPDATE

A black and white photograph of a two-story stone building, likely a schoolhouse, with a covered porch and several chimneys. The building is surrounded by trees and a grassy field. A person is visible sitting on the porch steps.



An aerial black and white photograph of the University of Minnesota campus. The image shows a large, multi-story academic building complex with a central courtyard. To the right is a long, single-story building, likely a library or administrative building. The campus is surrounded by dense trees and residential areas. A dirt road or path runs through the foreground, leading towards the main building complex.